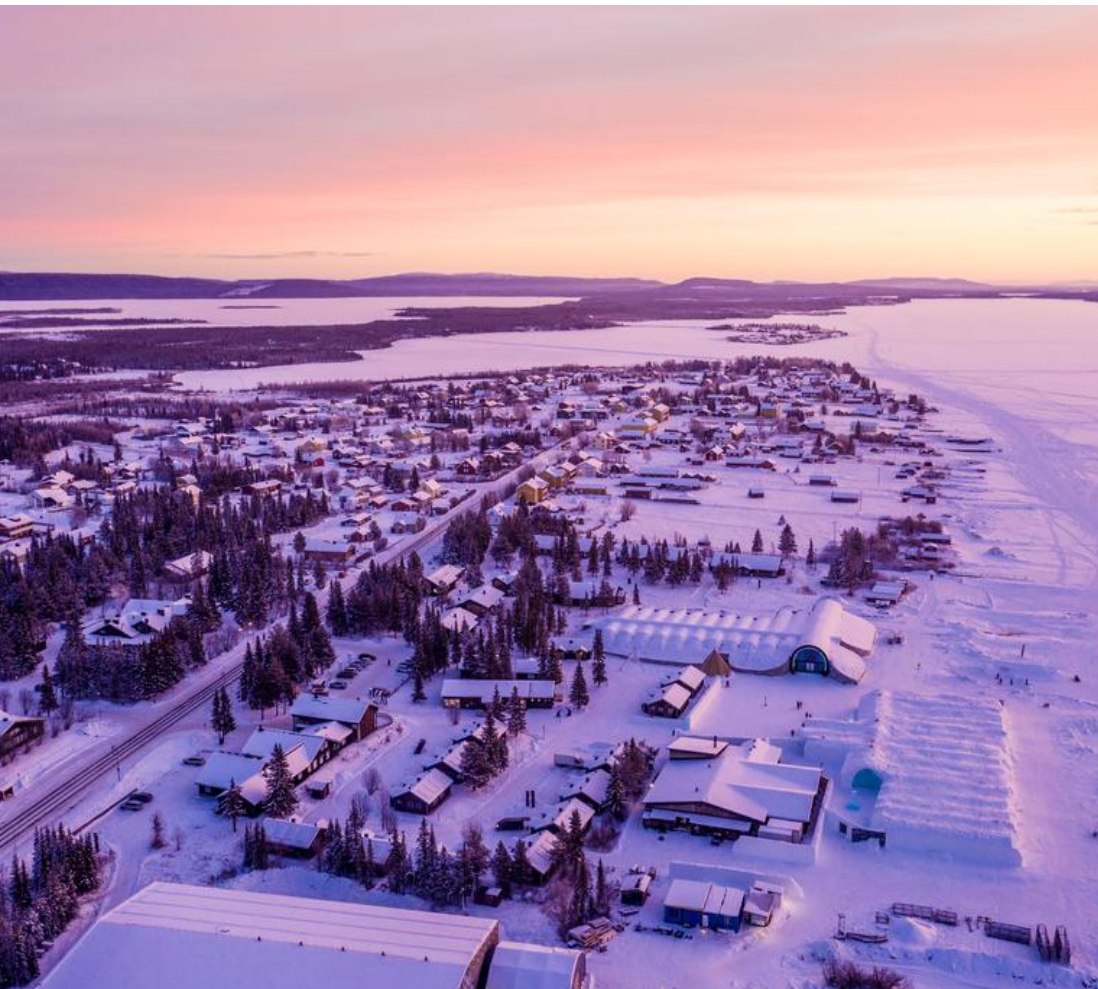
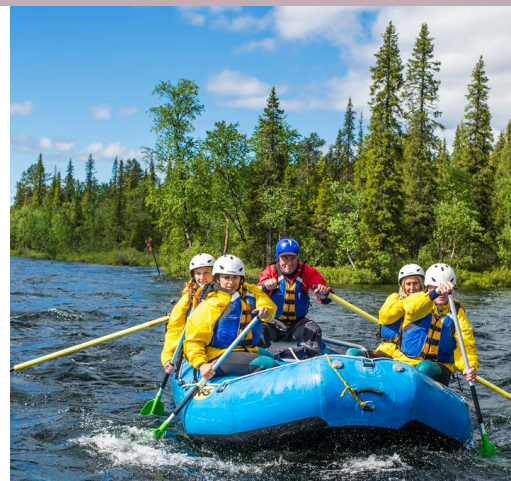


SAMPLE JOURNEY TO

SWEDEN

GILTEDGE





WELCOME TO SWEDEN

Offering everything from deep-blue archipelagos and Northern Lights, to killer fashion, food and design, Sweden is a Nordic dream date.

Truth be told, the best thing about Sweden is its natural assets. Indeed, to really appreciate this country's magnetism, take time to leave the city behind. Whether you're sailing across an archipelago to a lonely island or trekking along a kingly trail flanked by snowcapped mountains, the sense of space, solitude and freedom is matched by few corners of Western Europe. It makes perfect sense: Sweden claims one of the lowest population densities on the continent.



GETTING THERE

ACCOMMODATION



ICE HOTEL

FEATURES

The Ice Hotel is built each year in the tiny town of Jukkasjärvi, 200 km north of the Arctic Circle. Madness it may be, but this unique, world-famous ice hotel is a totally inspiring venture.

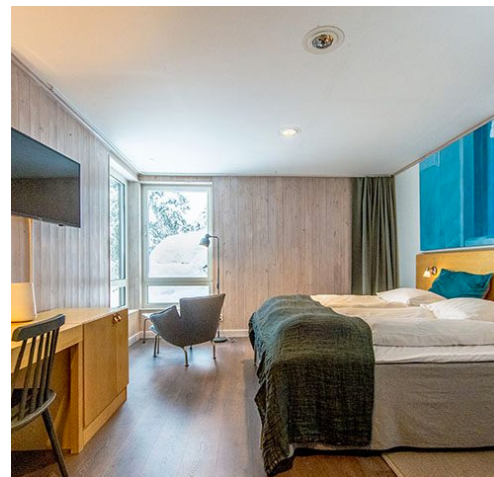
The Ice Hotel features rooms entirely made out of sculptured ice from the neighbouring Torne River. Warm rooms are also offered. A bookable sauna experience featuring a sauna, wood-burning hot tub and ice bath is available.

Holding a temperature between -5 to -8 degrees Celsius, the individually themed cold rooms include hand-carved ice furnishings by international artists. Guests sleep in thermal sleeping bags on exclusive Carpe Diem beds covered in reindeer hides.

All warm rooms feature a flat-screen TV with cable channels, dining area, and a private bathroom equipped with a shower. Complimentary Wi-Fi is offered in all rooms.

The on-site Ice Hotel restaurant serves traditional dishes with locally produced ingredients. Guests can relax with hot drinks and snacks in the warm lounge, or enjoy cocktails served in glasses made out of ice in the below-freezing Icebar.

The area around Ice Hotel is popular for outdoor winter activities such as dog sledding, reindeer sled excursions, and snowmobile tours. In the winter, guests can enjoy northern lights if lucky.



EXCURSIONS

DAY 2

Welcome drinks and dinner at the Ice Hotel.

Start your evening with a glass of wine or a cocktail. The bar has all the classics, as well as a selection of house cocktails inspired by the Arctic - what more appropriate than a Dog Sled Sour or a Sparkling Polar Night?

After your welcome drink, enjoy your welcome dinner at the Ice Hotel.



DAY 3

Ice sculpting competition.

The competition starts with the instructor talking about the crystal clear ice, which is harvested from Tore River. After that, you get an introduction on how to use the tools, your own ice block and can let the creativity flow and ice take shape. Take the opportunity to create your own ice sculpture out of the pristine natural ice — something many artists dream of.



DAY 3

Sami village and reindeer farm visit.

The Sami are one of the world's indigenous people with their own language, culture and customs that differ from the societies around them. Reindeer are a central element of how the Sami live their lives, a legacy from the hunter/gatherer period with the herders following the reindeer on their ancient migration routes and seasonal foraging grounds.





DAY 3

Wilderness dinner.

Taste the season on this delicious dinner experience in the woodlands. Head out to a secluded wilderness camp, together with a guide. The northernmost part of Sweden has eight seasons, each with its own characteristics, which inspires the exclusive three-course wilderness dinner made and served by your guide.



DAY 4

Sauna rituals.

The sauna has a long tradition in the northern Sweden and the contrasts between hot and cold is said to have wholesome effects. Do the ten steps in Jukkasjärvi Sauna Ritual and try everything from the sauna, wash yourself with tar soap, take a plunge into Torne River and have a pleasant moment in the heated outdoor bathtubs.



DAY 4

Wilderness skills adventure.

Get the right skills for surviving and navigating in the wilderness on this fun and easy adventure that takes you deep into Jukkasjärvi's woodlands. Your experienced wilderness guide talks about the nature around you, how to navigate by signs in nature and how to treat it with respect. Learn about the basic facts on what you can eat, how to find the best shelter and most importantly, how to start a fire with flint.



DAY 5

Cross-country skiing.

The tour starts at Ice Hotel where you are equipped and get a short instruction from the guide of the best techniques for cross-country skiing. Together with the guide, you head out, inhaling clean and crisp air, and ski upstream Torne River. After you reach the island Rimisaari, make coffee over an open fire and enjoy a grilled sausage.



DAY 5

Farewell dinner at Chefs Table on the Verandah.

You are invited to sit down at the huge wooden table with the rest of the guests. Two chefs from Ice Hotel's brigade cook and serve a twelve-course menu with accompanying beverages selected by sommelier Sofie Nordefors, in front of you. While you enjoy the food, the chefs talk about the produce.



DAY 5

Dog sledding.

Listen to the steady thuds of the dogs' paws against the snow and marvel at the wonderful surroundings on this sled dog ride through the woodlands. Experience the beautiful winter wonderland from the dog sled. This is a perfect activity for those who want a calm and cozy tour. You will stop along the way for wilderness coffee and cake, served by an open fire.



PROPOSED ITINERARY

DAY	MORNING	AFTERNOON	EVENING
DAY 1		Guests to meet at OR Tambo International Airport, check-in at the Lufthansa Airlines check in counters. Pre-departure drinks and snacks at a semi private lounge.	19h40: Departure of flight from Johannesburg. This is a full service flight. Total flying time: 10 hours. Overnight: On-board flight.
DAY 2	05h30: Arrival at Frankfurt International Airport - remain in transit for onward connecting flight. 06h40: Departure of flight from Frankfurt. This is a full service daylight flight. Total flying time: 1 hour 45 minutes. 08h50: Arrival at Stockholm Airport - remain in transit for onward connecting flight. Proceed through immigration and luggage collection. 11h40: Departure of flight from Stockholm. This is a full service daylight flight. Total flying time: 1 hour 25 minutes.	13h15: Arrival at Kiruna Airport. Coach transfer from the airport to the hotel. Check in at the hotel - followed by time at leisure (ice cocktail served on arrival). Guided orientation tour of the Ice Hotel and its facilities.	Welcome Dinner at the Ice Hotel Overnight - Ice Hotel (COLD ART SUITES) including breakfast daily (1 night)
DAY 3	Breakfast at the hotel. Half day guided Sami Camp visit.	Lunch at the Sami Village. Return to the hotel mid afternoon Ice sculpting competition.	Wilderness dinner. Overnight - Ice Hotel (WARM KAAMOS ROOMS) including breakfast daily.
DAY 4	Breakfast at the hotel. Half day guided wilderness skills adventure.	Lunch at the Ice Hotel. Traditional Swedish Sauna Experience.	Dinner at the Ice Hotel. Overnight - Ice Hotel (WARM KAAMOS ROOMS) including breakfast daily.

DAY	MORNING	AFTERNOON	EVENING
DAY 5	<p>Breakfast at the hotel.</p> <p>Cross-country skiing experience.</p> <p>Dog sledding.</p> <p>Farewell dinner - Chefs Table on the Verandah.</p> <p>Overnight - Ice Hotel (WARM KAAMOS ROOMS) including breakfast daily.</p>		
DAY 6	<p>Breakfast at the hotel.</p> <p>Morning at leisure.</p> <p>Check out formalities followed by coach transfer to the airport.</p> <p>10h40: Check in at Kiruna International Airport.</p>	<p>13h40: Departure of flight from Stockholm. This is a full service daylight flight. Total flying time: 1 hour 40 minutes.</p> <p>15h20: Arrival at Stockholm International Airport - remain in transit for onward connecting flight</p>	<p>18h50: Lufthansa flight departure from Stockholm. This is a full service daylight flight - flying time approx 1 hour 45 minutes.</p> <p>20h55: Arrival at Frankfurt International Airport - remain in transit for onward connecting flight.</p> <p>22h10: Departure of flight from Frankfurt. This is a full service daylight flight - flying time approx 11 hours 35 minutes.</p> <p>Overnight - Flight.</p>
DAY 7	<p>07h40: Arrival of flight into Johannesburg.</p> <p>Pass through immigration & passport control before collecting luggage.</p> <p>End of event.</p>		

GILTEDGE