

SAMPLE JOURNEY TO

JAPAN

**GILTEDGE**







## WELCOME TO JAPAN

Japan is truly timeless, a place where ancient traditions are fused with modern life as if it were the most natural thing in the world.

Japan is a long and slender, highly volcanic archipelago. It's over two-thirds mountains, with bubbling hot springs at every turn. In the warmer months there is excellent hiking, through cedar groves and fields of wildflowers, up to soaring peaks and ancient shrines (the latter founded by wandering ascetics). In the winter, all this is covered with snow and the skiing is world class. (And if you've never paired hiking or skiing with soaking in onsen, you don't know what you've been missing.) Meanwhile in the southern reaches, there are tropical beaches for sunning, snorkelling and diving.





GETTING THERE



# ACCOMMODATION



# HOTEL TENYU HAKONE

## FEATURES

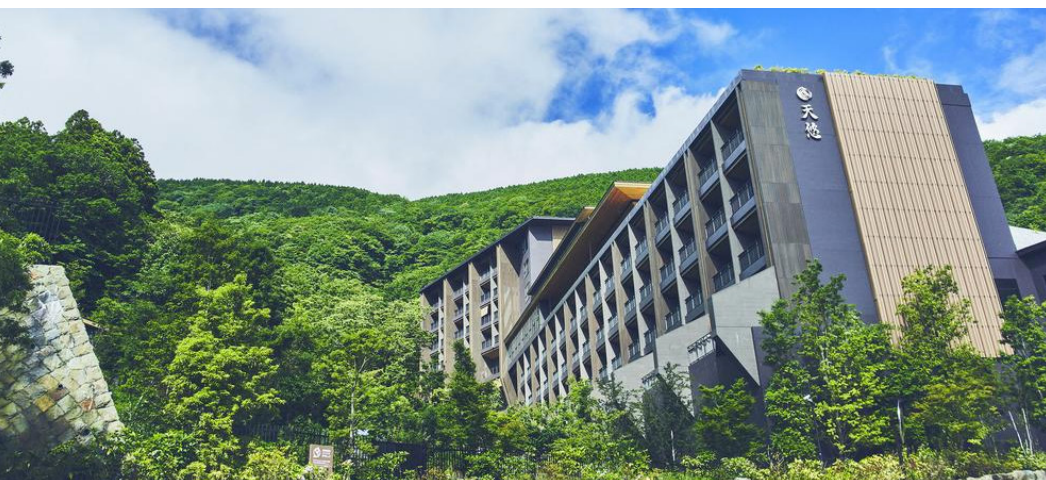
Opened in April 2017, Hakone Kowakien Tenyu offers Japanese-style rooms with tatami flooring, an open-air bath or ceramic open-air hot springs bath made with Shigaraki pottery. The property boasts views of Tonomine, Myojogatake and Mount Asama. Complimentary Wi-Fi is available throughout the property.

All rooms have air conditioning, a flat-screen TV, minibar, refrigerator, electric kettle and private bathroom. Complimentary bath amenities and a hairdryer are provided.

Guests can enjoy the shared lounge, shops, on-site gardens and terrace. There is also a spa lounge and sauna available for guests.

There is an on-site bar and lounge in addition to a Japanese-style restaurant. Hakone Kowakien Tenyu offers a breakfast buffet. For dinner, guests can enjoy Japanese and Western-style fusion cuisine.

The property is a minutes walk from Tenyu Bus Stop and a 12-minute walk from Kowakien Bus Stop. Kowakudani station is a 16-minute bus ride from the property, while Hakone Kowakien Yunessun is a 5-minute walk away.







## NEW OTANI GARDEN HOTEL, JAPAN

### FEATURES

Conveniently located just a 5-minute walk from Akasaka Mitsuke Subway Station, The Hotel New Otani Tokyo Garden Tower features a 400-year-old Japanese garden.

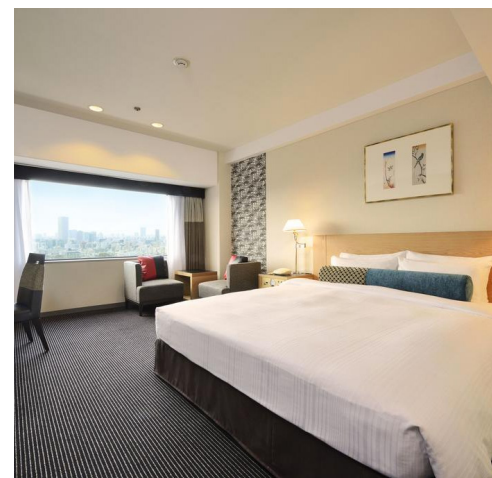
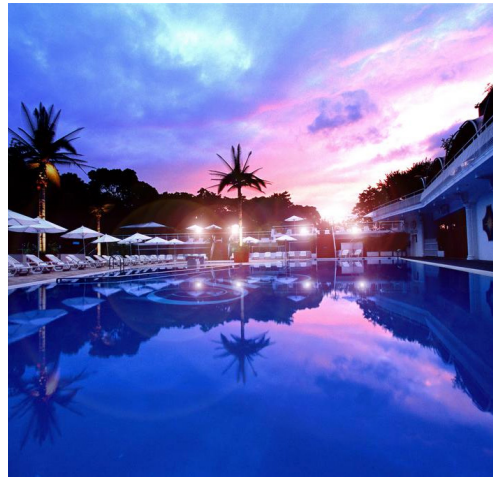
In summer, guests can take a dip in one of the largest outdoor hotel pools in the city. Complimentary Wi-Fi is available in all areas.

Spacious guest rooms provide all basic facilities during the stay, including air-conditioning, a fridge and an electric kettle.

The New Otani Hotel Garden Tower has a wide variety of international restaurants. Bella Vista offers authentic Italian dishes as well as the Tokyo skyline view from the 40th floor. Kyubey, located on the lobby floor, offers a selection of fine sushi.

The hotel provides various services like a concierge desk, currency exchange and ATM machines. A spa and gym facility are also on site.

Nagatacho Subway Station is a 5-minute walk from the property. The Imperial Palace is a 10-minute drive away.





EXCURSIONS



## DAY 2

**Welcome dinner at Shabu-Shabu Geihinkan.** Hop onto a bullet train and enjoy first class tickets on your way to Hakone. Check-in to your hotel and relax with the remainder of the day at leisure before your welcome dinner at Shabu-Shabu Geihinkan. "Shabu-shabu" can be said as a representative of the meat dish you want to have when the stomach is growling. Enjoy the "Japanese beef" or "Matsusaka beef" shabushabu feast on the 2nd floor of Geihinkan where you can also feel the warmth of this historical building.



## DAY 3

### *Excursion to Hakone.*

Next head to Hakone, a large volcano next to Mount Fuji that erupted thousands of years ago. Ride the world's second longest cable car passing over fumes and hot rivers. After your excursions, enjoy a traditional Kaiseki style lunch.



## DAY 3

### *Dinner at Soba Kihinkan.*

Originally built as an annex of Baron: Heitaro Fujita in 1918, this restaurant is now a Registered Tangible Cultural Property of Japan. While gazing at the beautiful Japanese garden, enjoy the rich flavor of the meal and imagine yourself here living in the romantic atmosphere of Taisho era.



## DAY 4

### *Welcome drinks at the Tower Cafe.*

Located on the 40th floor of the Tower inside the new Otani Hotel, Tower Cafe features a spectacular view of the symbolic Tokyo Tower, standing in the center of Akasaka city. With a well appointed interior, this cozy bar is a perfect place for a leisurely drink before dinner.



## DAY 5

### *Half day Tokyo highlights tour.*

Begin your day at Hamarikyu Gardens, an Edo Period Japanese garden surrounded by futuristic skyscrapers. Next head to Asakusa and visit Sensoji, Tokyo's oldest temple, built in the 7th century. The temple is approached via the Nakamise, a shopping street that has been providing temple visitors with a variety of traditional, local snacks and tourist souvenirs for centuries.



## DAY 4

### *Dinner at the Tower Buffet Restaurant.*

Tower Buffet offers an all-star selection of items from popular restaurants within the hotel. The culmination of skills of the chefs brings forth an impressive lineup of authentic dishes, among which is New Otani's prided roast beef. The breathtaking view from the 40th floor that includes Tokyo Skytree®, the skyscrapers of Shinjuku, and the Rainbow Bridge, will be a treat to your eyes while you dine.







## DAY 5 & 6

### *Rugby World Cup Quarter Finals Match.*

This will be a great time of year to visit Japan weather wise as it won't be too hot and it won't be too cold either. Perfect weather for rugby and rugby spectating! The teams participating are divided into four pools of five teams. There's a total of 48 matches that will be played, this includes the 40 pool matches, quarter-finals, semi-finals, a bronze final and the final.



## DAY 6

### *Sushi making master class.*

Learn first-hand the right techniques for 'maki sushi' (rolled sushi), 'gunkan maki' (sushi rice wrapped with a strip of seaweed and topped with soft ingredients), and the famous 'nigiri sushi' (sushi rice topped with a slice of raw fish). Needless to say, you will be able to eat your own creations as a light lunch!



## DAY 5

### *Lunch at Momiji Rice Cake at New Otani Garden Hotel.*

At the far end of the Japanese Garden lies Momiji-tei, a peaceful restaurant serving top quality Japanese beef and seasonal vegetables. The fresh ingredients are served in "teppanyaki" style where the chef prepares each meal by your table on a grill.



## DAY 7

### *Farewell BBQ Lunch at Jojoen Restaurant.*

Over nearly four decades, Jojoen has established a reputation for originating Japan's finest dining experience at each and every one of its restaurants in premium locations around Japan. The menu features an incredible selection of Japan's famed wagyu beef and other scrumptuous ingredients. They also offer superb interiors and the very best in smokeless BBQ grillers for your complete comfort.



# PROPOSED ITINERARY

DAY	MORNING	AFTERNOON	EVENING
DAY 1	<p>Guests to meet at Cape Town International Airport, check-in at the relevant domestic Airlines counters.</p> <p>Departure of domestic flight from Cape Town. This is a limited service flight. Total flying time: 2 hours.</p> <p>Arrival at Johannesburg International Airport - check in at the Cathay Pacific check in counters for your international flight.</p>	<p>12h25: Departure of flight from Johannesburg. This is a full service flight.</p>	<p>Overnight: Flight</p>
DAY 2	<p>07h10: Arrival at Hong Kong International Airport.</p> <p>Remain in transit.</p> <p>08h10: Departure of flight from Hong Kong. This is a full service flight.</p>	<p>13h35: Arrival at Narita International Airport. Proceed through immigration and luggage collection.</p> <p>Bullet train transfer to Hakone.</p> <p>Check-in at hotel and enjoy the remainder of the day at leisure.</p>	<p>Welcome group dinner at Shabu-Shabu Geihinkan at Hakone Tenyu Hotel.</p> <p>Overnight: Hotel Tenyu Hakone. Based on 9 double/ twin sharing rooms, including traditional breakfast and dinner.</p>
DAY 3	<p>Breakfast at the hotel.</p> <p>Full day excursion to Fuji Panoramas.</p>	<p>Lunch at Yamano Hotel.</p> <p>Return to the hotel for the remainder of the afternoon at leisure.</p>	<p>Dinner at Soba Kihinkan at Hotel Tenyu.</p> <p>Overnight: Hotel Tenyu Hakone. Based on 9 double/ twin sharing rooms, including traditional breakfast and dinner.</p>
DAY 4	<p>Breakfast at the hotel.</p> <p>Check-out formalities from Hotel Tenyu.</p> <p>11h00: departure from Hakone to Tokyo.</p>	<p>Upon arrival in Tokyo, check-in at hotel and enjoy the remainder of the afternoon at leisure.</p> <p>17h00: Welcome drinks at the Tower Cafe.</p>	<p>Dinner at the Tower Buffet Restaurant.</p> <p>Overnight: New Otani Garden Hotel, Tokyo. Based on 9 double/sharing rooms, including breakfast daily.</p>



DAY	MORNING	AFTERNOON	EVENING
DAY 5	<p>Breakfast at the hotel.</p> <p>09h00: Half day Tokyo Highlights tour.</p>	<p>Lunch at Momiji Rice Cake at new Otani Garden Hotel.</p> <p>Transfer to the Tokyo Stadium.</p>	<p>19h15: Rugby World Cup Quarter Finals Match.</p> <p>Dinner at leisure.</p> <p>Overnight: New Otani Garden Hotel, Tokyo. Based on 9 double/sharing rooms, including breakfast daily.</p>
DAY 6	<p>Breakfast at the hotel.</p> <p>09h00: Sushi making masterclass.</p>	<p>Enjoy a light sushi lunch from the masterclass.</p> <p>Return to the hotel for the remainder of the afternoon at leisure.</p>	<p>19h15: Rugby World Cup Quarter Finals Match.</p> <p>Dinner at leisure.</p> <p>Overnight: New Otani Garden Hotel, Tokyo. Based on 9 double/sharing rooms, including breakfast daily.</p>
DAY 7	<p>Breakfast at the hotel.</p> <p>Hotel check-out formalities.</p> <p>Morning at leisure for last minute shopping.</p>	<p>13h00: Farewell BBQ Lunch at Jojoen Restaurant.</p> <p>15h00: Transfer to the airport.</p> <p>16h00: Arrival at Narita International Airport.</p> <p>Check-in at the Cathay Airlines counters, check-in luggage and proceed through immigration.</p>	<p>18h30: Departure of flight from Tokyo.</p> <p>This is a full service flight.</p> <p>22h25: Arrival of flight into Hong Kong. Remain in transit for onward connecting flight.</p>
DAY 8	<p>00h25: Departure of flight from Hong Kong. This is a full service flight.</p> <p>07h10: Arrival of flight into Johannesburg. All travellers are to pass through passport control, baggage collection and security prior to checking in for their onward connecting flights.</p> <p>Flight departure from Cape Town International Aiport.</p>		

**GILTEDGE**